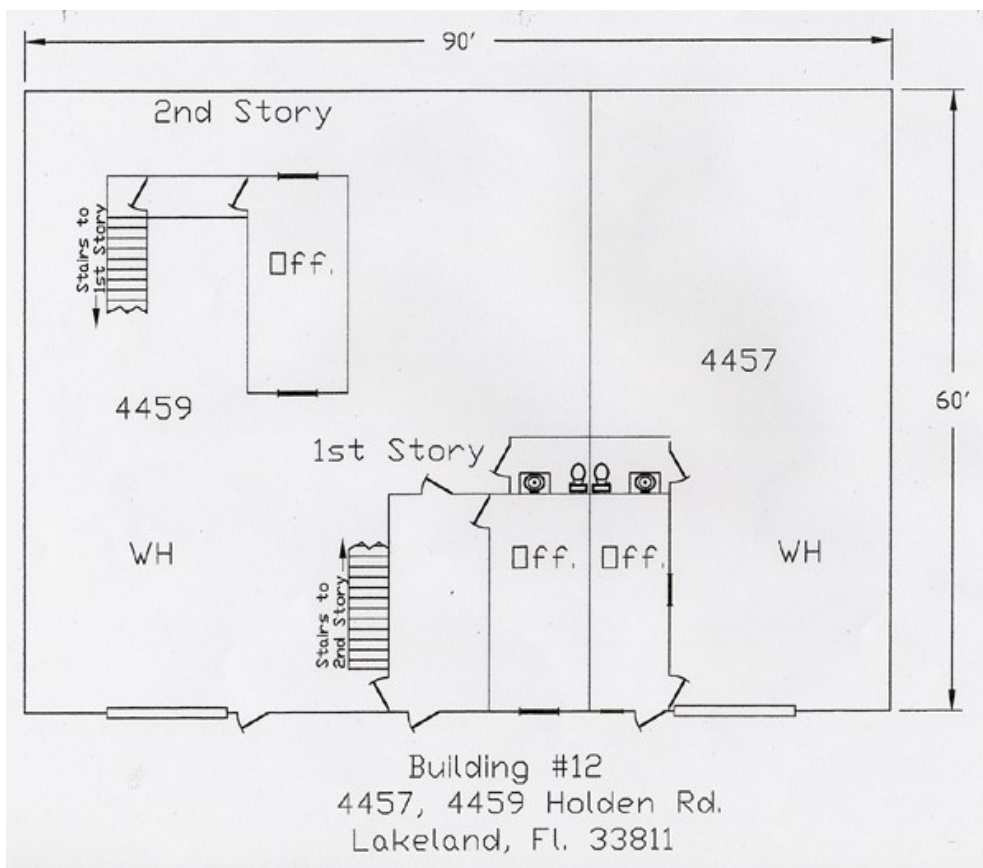
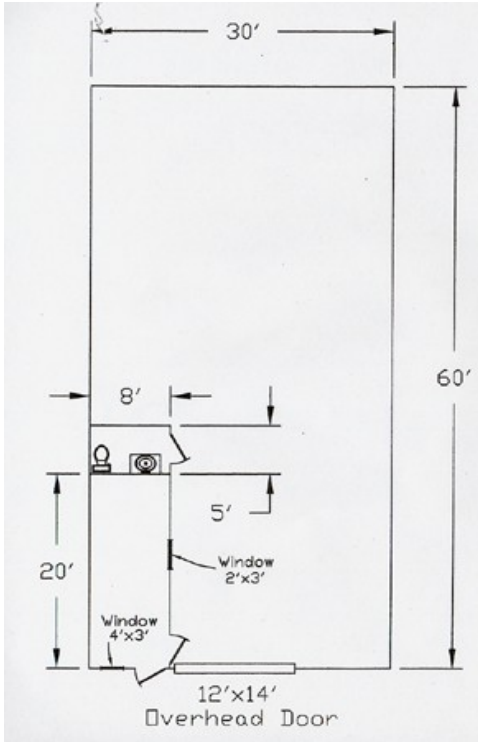


Building # 12 - 4457 and 4459 Holden Road

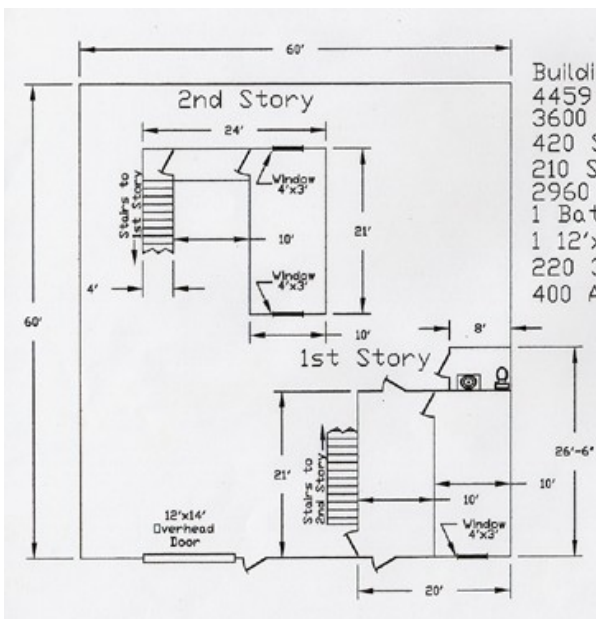
4457 Holden Road - 2,000 sf total which includes 1,600 sf warehouse and 200 sf a/c office and 200 sf upstairs storage, 220 three phase, 200 amp, 1 12'X14' overhead door, 1 bathroom.

4459 Holden Road - 3,810 sf total which includes 420 sf a/c downstairs, 210 sf upstairs office , 3,180 sf warehouse, 1 overhead door 12'X14', 220 three phase, 400 amp, 1 bathroom.





Building 12
 4457 Holden Rd.
 1800 SQ FT, Total
 1600 SQ FT, Warehouse
 200 SQ FT AC Office
 1 Bathroom
 1 12'x14' Overhead Door
 220 3 Phase
 200 AMP



Building 12
 4459 Holden Rd.
 3600 SQ FT, Total
 420 SQ FT, AC Downstairs Office
 210 SQ FT, AC Upstairs Office
 2960 SQ FT, Warehouse
 1 Bathroom
 1 12'x14' Overhead Door
 220 3 Phase
 400 AMP