

Building #6 - 3504 Century Blvd. Lakeland, Florida

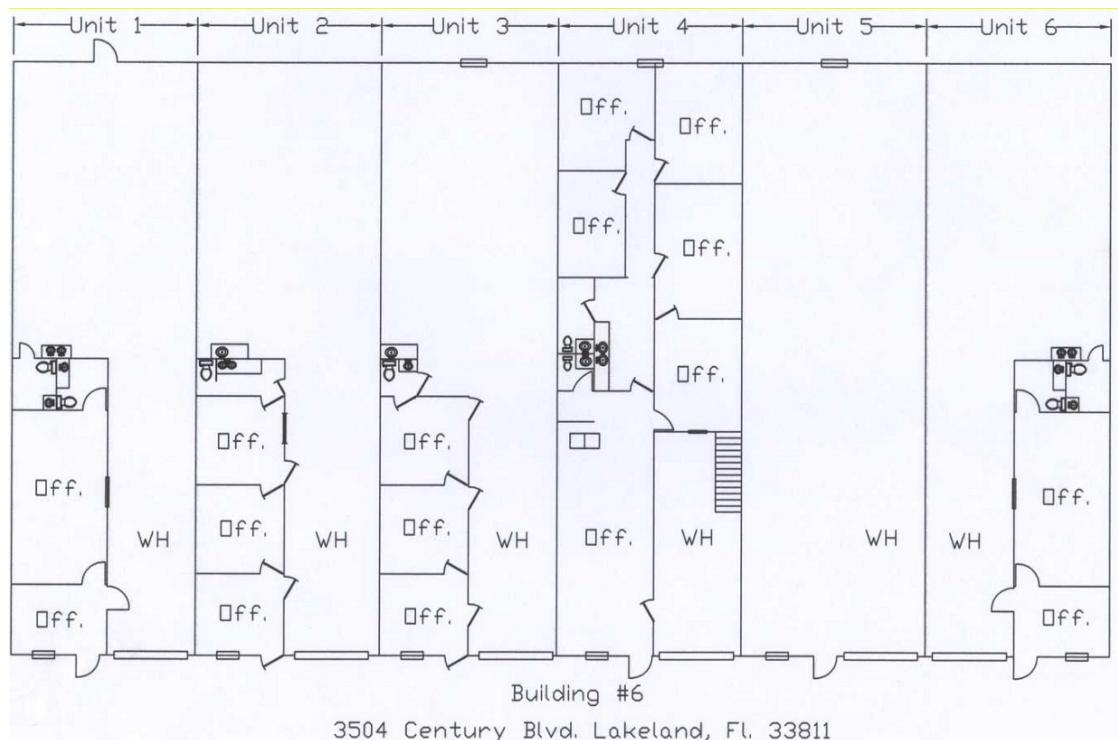
Unit 1: - 25 X 80 - 2,000 sf includes 480 sf a/c offices, 1520 sf warehouse, 220 single phase, 100 amp, one 10 X12 overhead doors, 2 bathrooms

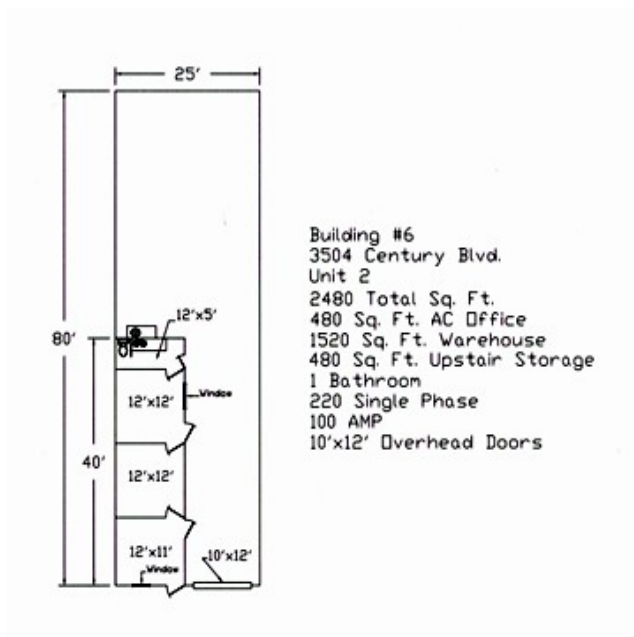
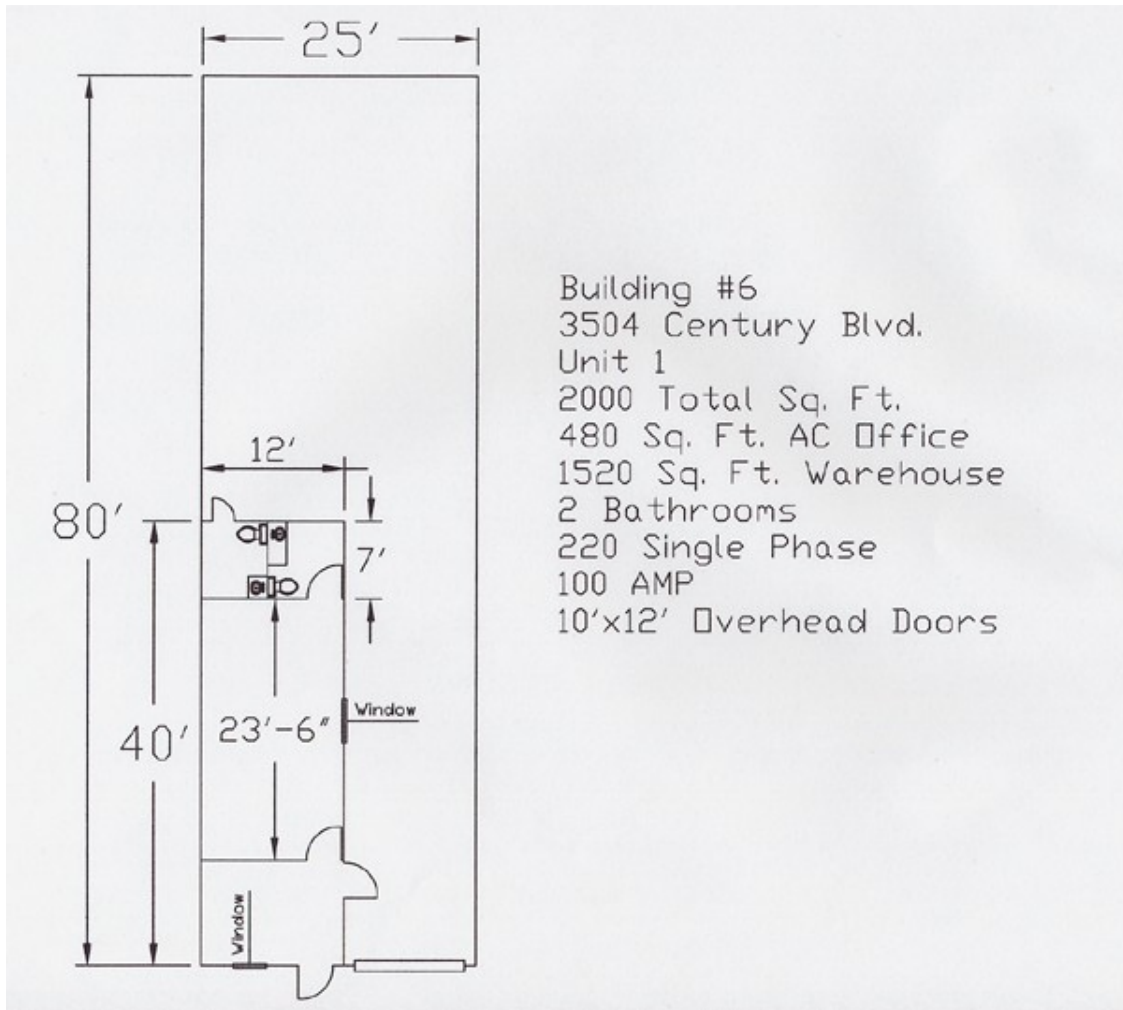
Unit 2: - 25 X 80 - 2,000 sf includes 480 sf a/c offices, 1520 sf warehouse, 480 sf upstairs storage, one bathroom, 220 single phase, 100 amp, one 10 X 12 overhead door

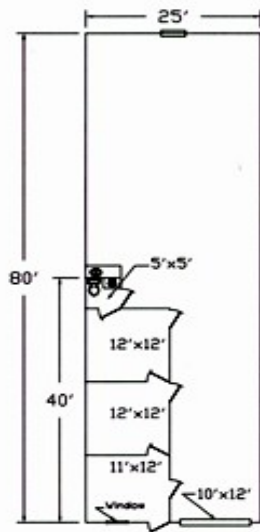
Unit 3: - 25 X 80 - 2,000 sf includes 440 sf a/c offices, 1560 sf warehouse, 440 sf upstairs storage, one bathroom, 220 single phase 100 amp, one 10 X 12 overhead door, 1 exhaust fan

Unit 4: - 25 X 80 - 2,000 sf includes 1,520 sf a/c offices, 480 sf warehouse, 420 upstairs storage, 220 three phase, 200 amp, one 10 X12 overhead door, 2 bathrooms, kitchen, 1 exhaust fan

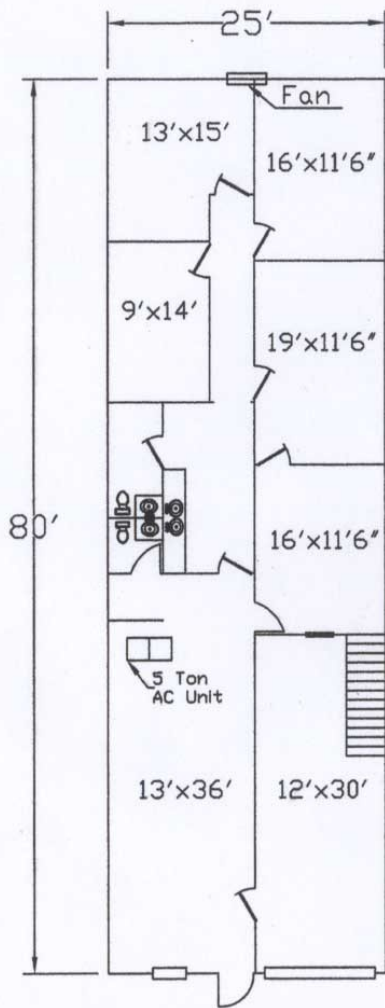
Unit 5 & 6: - 50 X 80 - 4,000 sf includes 480 sf a/c offices and 3,520 sf warehouse, Unit 5 is 220 three phase, 200 amp, and Unit 6 is 220 single phase 100 amp, (2) 10 X12 overhead doors, 2 bathrooms, 1 exhaust fan



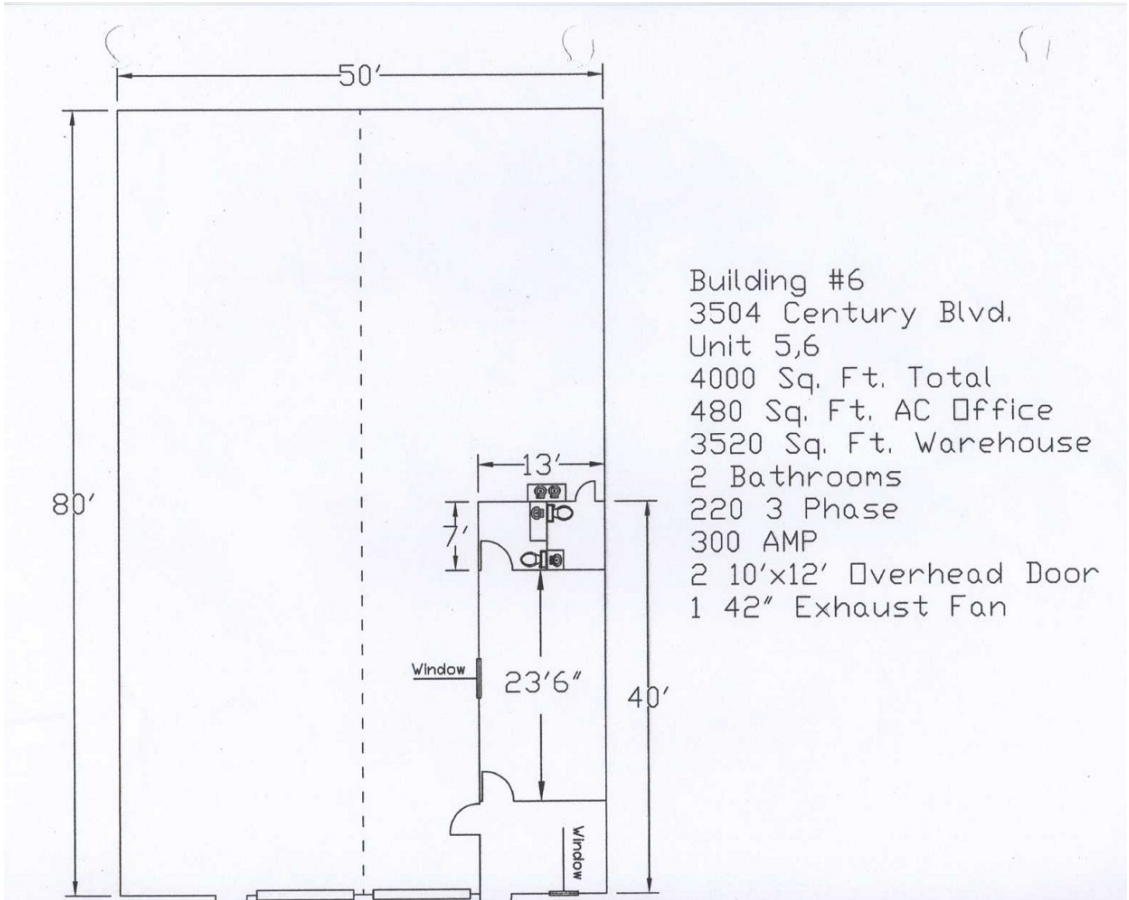




Building #6
 3504 Century Blvd.
 Unit 3
 2440 Total Sq. Ft.
 440 Sq. Ft. AC Office
 1560 Sq. Ft. Warehouse
 440 Sq. Ft. Upstair Storage
 1 Bathroom
 220 Single Phase
 100 AMP
 10'x12' Overhead Doors
 1 Exhaust Fan



Building #6
 3504 Century Blvd.
 Unit 4
 2420 Sq. Ft. Total
 1520 Sq. Ft. AC Office
 480 Sq. Ft. Warehouse
 420 Sq. Ft. Overhead Storage
 2 Bathroom
 220 3 Phase
 200 AMP
 1 10'x12' Overhead Door
 1 Exhaust Fan



Building #6
3504 Century Blvd.
Unit 5,6
4000 Sq. Ft. Total
480 Sq. Ft. AC Office
3520 Sq. Ft. Warehouse
2 Bathrooms
220 3 Phase
300 AMP
2 10'x12' Overhead Door
1 42" Exhaust Fan